

Meet the Teacher P3a

- Mrs Bonnar -
Mon, Wed, Thu,
Fri.
- Mrs Morrison -Tue



To learn, to believe, to achieve



Honesty Kindness Courage Creativity

Promoting Positive Relationships at Davidson's Mains

- Vision: to learn, to believe, to achieve
- Values: Honesty, Kindness, Courage, Creativity
- Rules: Ready, Respectful, Safe

OUR VISION

- TO Learn -
- TO Believe -
- TO Achieve -



OUR AIMS

- We aim to provide a supportive and inclusive environment where everyone celebrates success and inspires each other to achieve their best.

OUR RULES

- Ready - Respectful - Safe -

Kindness



Creativity

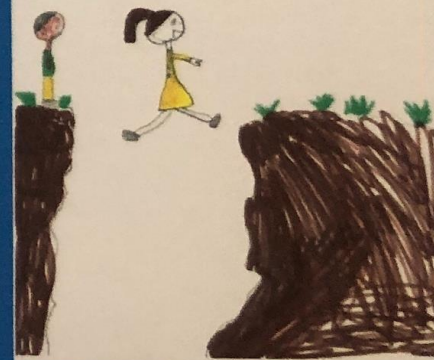


Our values

Honesty



Courage





The School Day

- Doors open at 8.50am
- Smart Start until 09:10am
- Break is 10.30-10.45am
- Lunch is 12.30-1.15pm
- Home time is 3.15pm

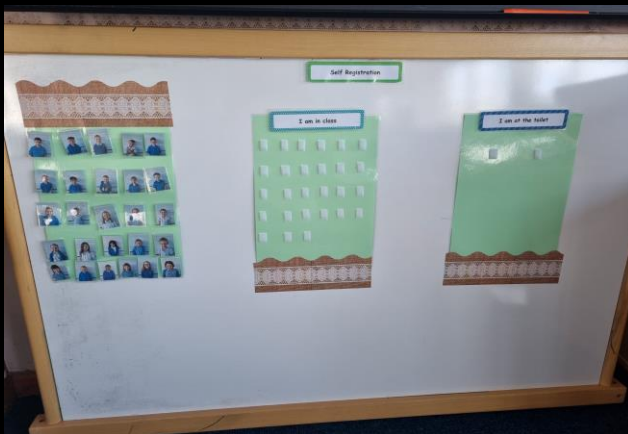
Expectations in Class

Working collaboratively in pairs and groups

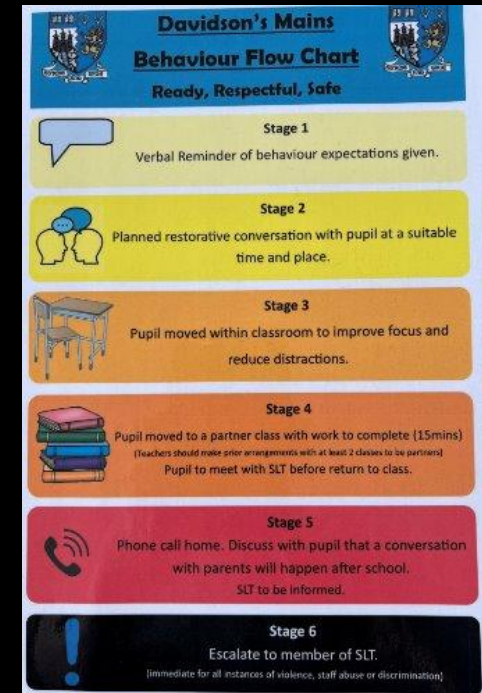
Building and encouraging independence

Encouraging responsibility for personal organisation

Davidson's Mains Behaviour Flow Chart

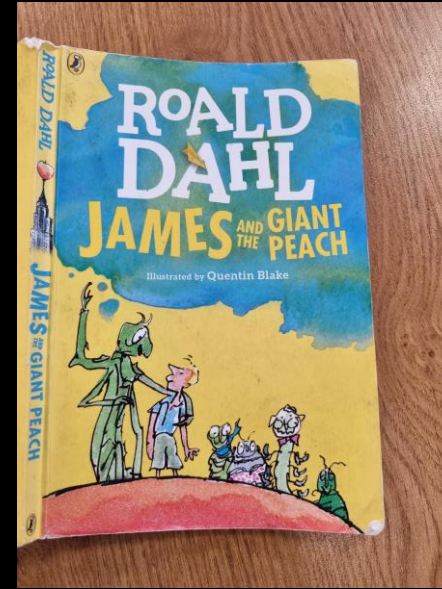


- Ready
- Respectful
- Safe



Literacy

- Reading - reading groups & class story/novel
- Writing - instructions, reports, imaginative, personal response, newspaper articles, letter writing
- Spelling - following the school's Literacy Rich programme
- Grammar - past tense adjectives and nouns, connectives
- Punctuation - full stops, capital letters, finger spaces, question marks, exclamation marks, commas, speech marks
- Listening & Talking - talk partner skills, whole class listening and talking, circle time, peer assessment



Numeracy/Mathematics

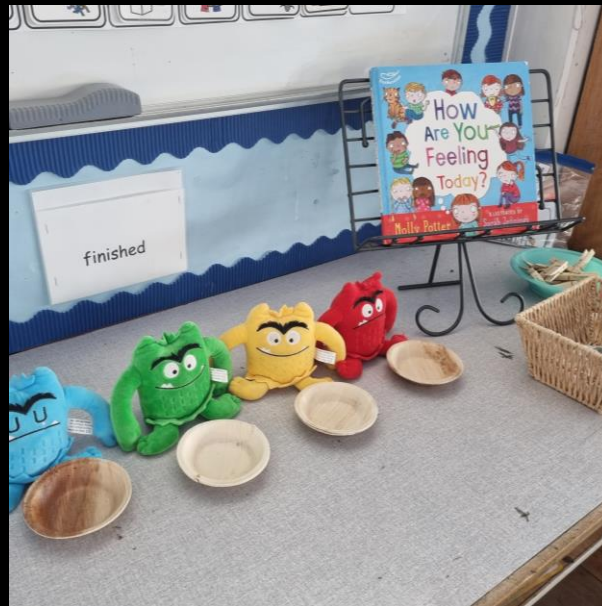
- SEAL - Stages of Early Arithmetical Learning
- Development of different strategies to solve questions
- Topic Maths - symmetry and shape, money, time, patterns, data handling, etc

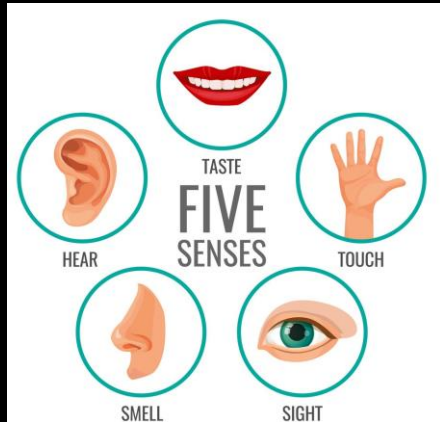
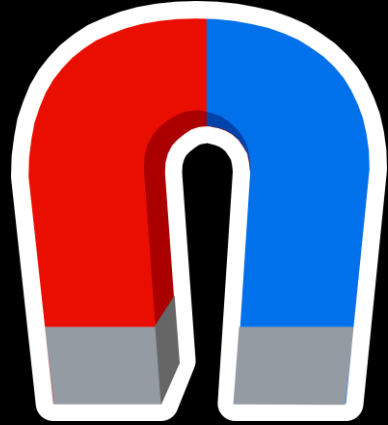




Health and Well-being

- Building Resilience Programme
- RSHP programme <https://rshp.scot/>
- Emotions
- Growth Mindset
- Keeping Myself Safe
- Zones of Regulation





IDL (Interdisciplinary Learning)

- Vikings
- Weather
- Science – forces and materials
- Body and Senses
- Growing Plants
- Communities

Homework



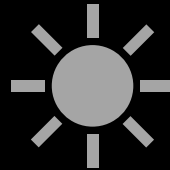
- Reading – books will start coming home on a Monday to be returned on a Thursday
- Termly homework grid with a variety of activities to practise Literacy, Numeracy, Health and Wellbeing and life skills

Reminders



Outdoor
Learning

Please wear
suitable
outdoor
clothing
everyday



PE (indoors and
outdoors)

Twice a week

Come to school in
PE kit (days will
change each
term)



Communication

Parents to contact
school office via
email

Admin@davidsonsmains.edin.sch.uk

Reporting 2024-25

2 x face to face Parents' Consultations - September & March - in school

A written 'Learning Conversation'

- How does it work?
 - 1:1 conversation between your child and the teacher
 - Across Term 3 - January - March
 - 4 per week, Monday to Thursday
 - Sent out to 4 families each week on a Friday (a paper copy!)

End of year summative report in June

- Curriculum for Excellence levels achieved, and working within, next session
- Short teacher comment on a child's progress, effort and personal qualities

Sharing the Learning 2024-25

- 'Meet the Teacher'
 - 29th August
- Two House Coffee Mornings
 - 10th or 17th January and
 - 16th or 23rd May
- Termly Newsletter
- Parent Consultations
 - 19th or 20th September
 - 20th or 21st March
- 'Share the learning' with a class visit:
 - 8th November
 - 13th May

Davidson's Mains Better Relationships, Better Learning, Better Behaviour Policy & Procedures

Key principles we have adopted to create a caring, supportive learning environment:

- an ethos that values positive, restorative and respectful relationships and promotes shared values
- an inclusive and safe learning environment which supports children and develops their skills and resilience enabling them to become responsible for their own behaviour
- recognising that all behaviour is communication and that understanding what is being communicated and the underlying needs is crucial for assessing and meeting children's needs and finding solutions

Absence & Attendance



Our procedure:

- If your child is ill or unable to attend school, either
 - phone us that morning (answerphone from 8am)
 - Or complete this form <https://forms.office.com/e/L7cbnR5cbQ>
 - Please give a reason for the absence
- If you do not contact us and your child is absent
 - We will send a text to the main contact
 - If we do not get a reply, we will phone the main contact
 - If we do not get a reply, we will phone the emergency contact.

If there are ongoing concerns about a child's absence/attendance, we will contact you to offer support.

Healthcare Planning



- No medication can be administered without the correct paperwork in place, which is also checked and authorised by the designated member of staff before being administered for the first time in school
- Please ensure that all relevant information about your child's health needs, including any changes to their condition or medication, is given to the designated person, at the earliest opportunity - you can hand this into the school office
- Prescribed medication must be supplied in the dispensing container with the original pharmacy label attached stating the pupil's name, date of birth, name of medication, time/frequency and route of administration. The statement 'As Directed' is not sufficient. Medication that is not supplied to school in the dispensing container with the original dispensing label cannot be accepted
- We require 2 sets of emergency medication e.g. inhaler, epipens.

Thank
you!

